

## Economy and Place Regional Advantage & Innovation

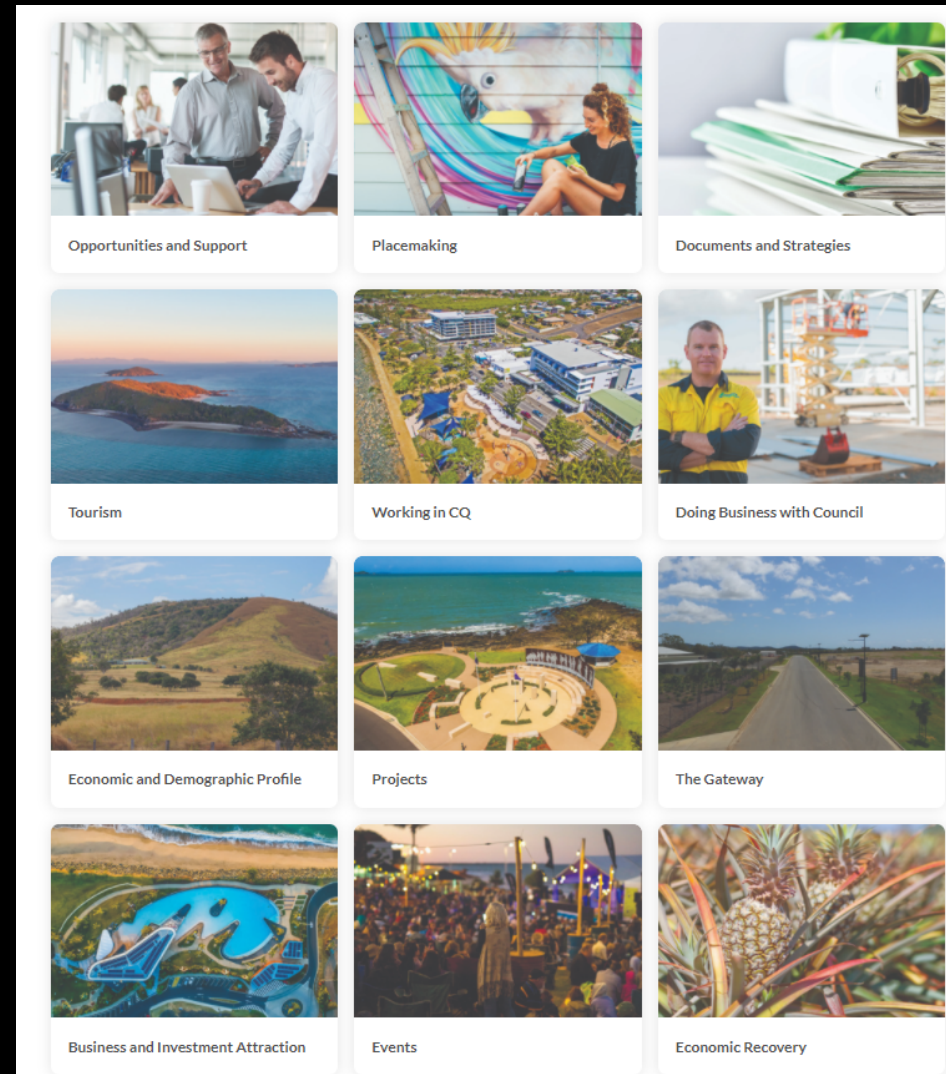
Influencing the economic wellbeing of our region to support thriving local business and industry environments.



# What do we do!

- Placemaking and community building projects
- Support local business and industry development programs
- Investment inquiry concierge service
- Partner with Capricorn Enterprise our tourism specialists
- Provide economic impact modelling and spendmapp data to businesses to support funding applications
- Economic Development Recovery Taskforce
- Monthly business e-bulletin (over 500 distribution)
- And so.....much.....more.....!

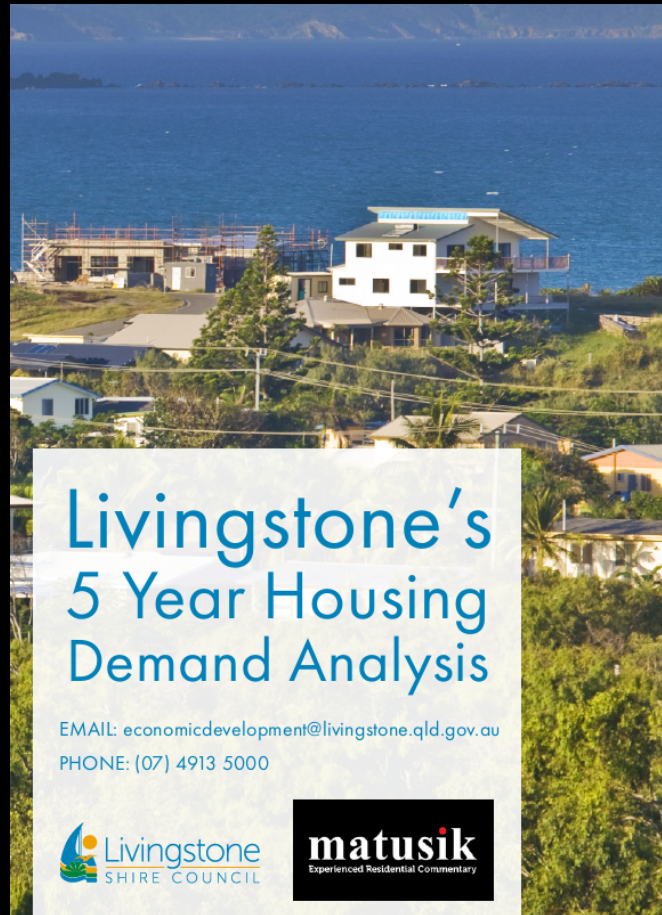
# Website



<https://www.livingstone.qld.gov.au/doing-business/investment-and-business>



# Latest Projects



<https://getinvolved.livingstone.qld.gov.au/>



# Economic Recovery

## Cobraball Bushfires

- Were any businesses locally impacted directly/indirectly? How?
- If still impacted can Council help? How
- Do any businesses here do Business Continuity Planning?
- Would you be interested in planning sessions if they were available?

An Australian Government bushfire recovery initiative

CAPRICORN COAST  
*Food Trail*



## Bushfire Recovery & Resilience Forum

### Community Science in Practice

SATURDAY 15 MAY - 9.00AM TO 4.00PM - YEPPON TOWN HALL

- **SHARE IDEAS** • **PROVIDE SUPPORT** •
- **INSPIRE INNOVATION IN RECOVERY, RENEWAL AND RESILIENCE** •

The whole community will have the opportunity to listen and talk to industry related experts, who will provide valuable information and insights into Bushfire Resilience & Recovery techniques for both urban and rural residents and the Horticultural & Agricultural industries.

**Topics covered at the forum:**

- Re-invigorating the use of cultural burning for fire and land management
- Vegetation management and clearing - updates on the latest policies and regulations
  - Findings from the 2019 Black Summer CRC Research Project
    - Bushfire resilient building guidance for QLD homes
  - Agmargins - access to diverse cropping options in our Region
- Horticulture Industry Toolkit launched for Bushfire Recovery & Resilience
  - Local Disaster Management Group updates
  - Landholder Bushfire Management Planning



**WITH GUEST SPEAKER**  
**SHANE WEBCKE**

**REGISTER NOW AT [BRRFORUM.EVENTBRITE.COM.AU](https://brrforum.eventbrite.com.au)**  
*(Registrations closes 6 May 2021)*

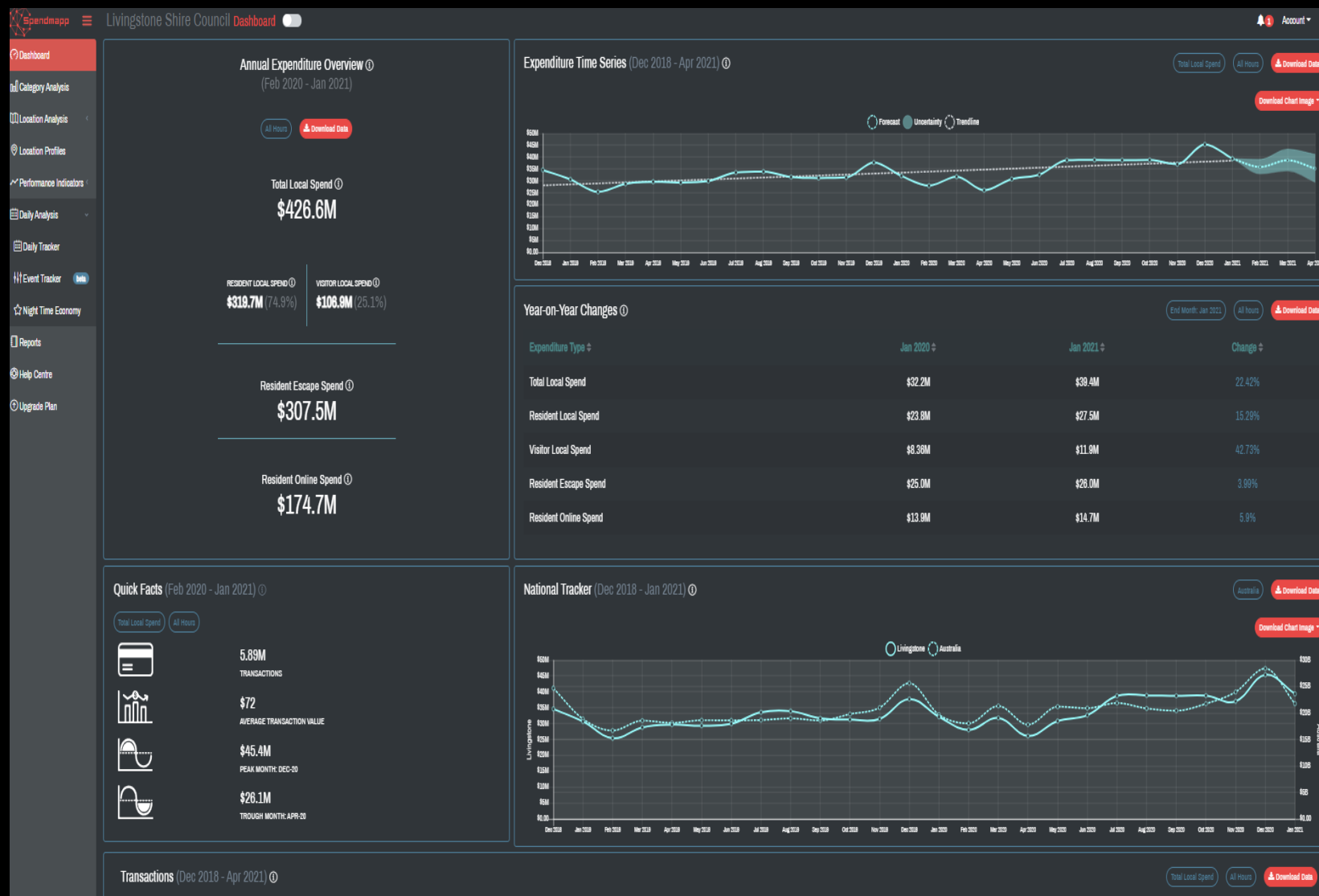
See the full list of speakers and stall holders at  
[www.livingstone.qld.gov.au](http://www.livingstone.qld.gov.au)

If you are feeling unwell or have a cough, fever, sore throat, fatigue or shortness of breath, we ask that you please stay home.  
Maintaining physical distancing requirements at the event is the individuals responsibility.

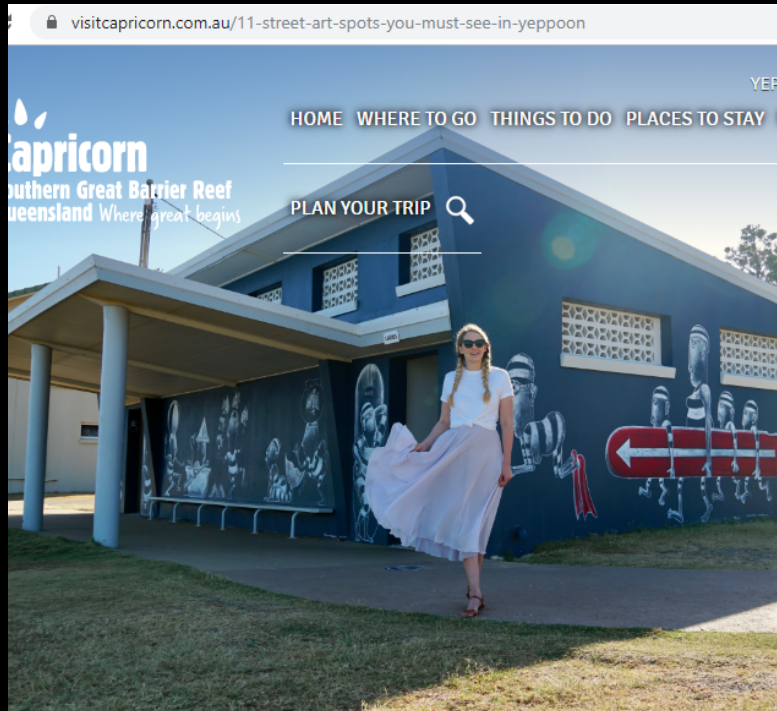


# Spendmapp

- Resident local expenditure
- Visitor local spend
- Total local spend
- Resident escape expenditure
- Resident online spend



# Placemaking



## Street art spots you must see in Yeppoon



Written By: [Little Grey Box](#)

**About the author:** Phoebe is a writer and presenter and Matt is a videographer. Together, they run Little Grey Box; an award-winning travel blog and YouTube channel.

The picturesque coastal town of Yeppoon and you'll discover there's much more waiting for you than just sun-drenched beaches and a sense of coastal calm. Yeppoon is home to exceptional cafes and a string of markets, boutiques all run by friendly locals. This burgeoning coastal culture scene, perfectly reflected in the vibrant street art dotted around the town and coastline. Here are 11 street art spots you absolutely must see in and around Yeppoon.



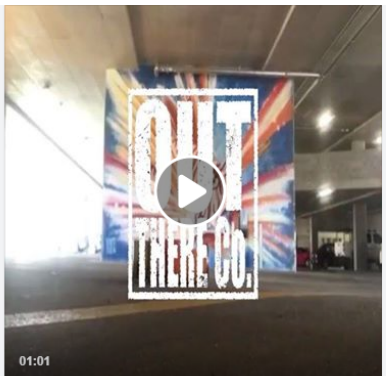
Marketing  
value



**Visit Capricorn**  
Published by Heather Congram [?] · February 7 · 🌐

Discover the eye-catching street art at Yeppoon's Town Centre Car Park. If you haven't already seen this video by @outthereco check it out 📺

<https://www.facebook.com/outthereco/videos/1454067171340203/...>  
See More

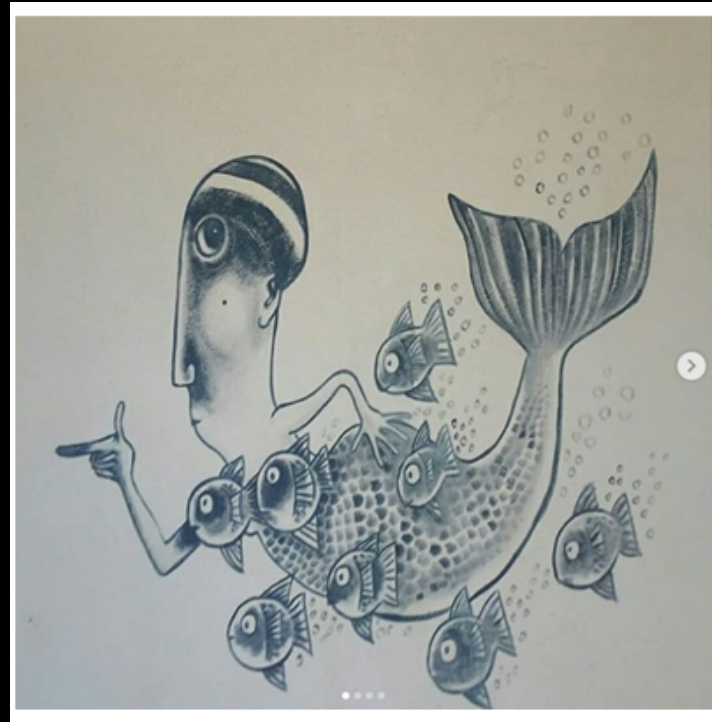


**Visit Capricorn**  
Published by Heather Congram [?] · February 23 · 🌐

'Beautiful Yeppoon... It's so gorgeous: the beaches are picture-perfect, the food is incredible, the weather is warm and wonderful and the locals are so amazing too.'

Thank you to Phoebe Lee, global travel writer, YouTuber and co-founder of Little Grey Box for these kinds words of love.

📸 IG @littlegreybox\_phoebe  
#visitcapricorn #southerngreatbarrierreef #thisisqueensland

**visitcapricorn**

visitcapricorn When visiting the Capricorn Coast make sure you check out the street art. These characters can be found at Emu Park, Main Beach near the Emu Park Surf Lifesaving Club.

#visitcapricorn  
#southerngreatbarrierreef  
#thisisqueensland

6w  
motzouris So good 😊

6w 2 likes Reply

📍 Liked by theblondenomads and 34 others

JUNE 2

Add a comment... Post

**Capricorn Enterprise**  
August 6 at 7:01 PM · 🌐

Spectacular renditions of local landscapes have recently been integrated into the Hill Street Bus Station in the form of illuminated glass panels, as part of Livingstone Shire Council's latest placemaking project. The stunning works by well-known Capricorn Coast artist Jet James celebrate our region's natural beauty and include representations of Coose Bay Beach, Ross Creek the and Yeppoon headlands which celebrate our regions natural beauty

<http://www.livingstone.qld.gov.au/CivicAlerts.aspx?AID=3042>

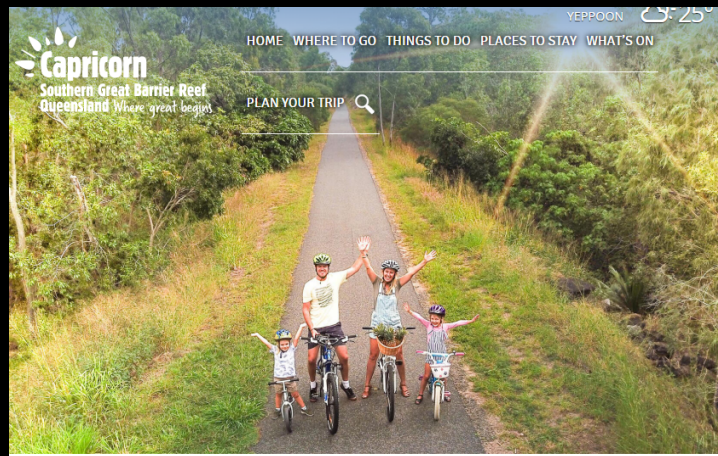


Kayla Anne 1 Comment

**Capricorn**  
Southern Great Barrier Reef  
Queensland Where great begins

HOME WHERE TO GO THINGS TO DO PLACES TO STAY WHAT'S ON

PLAN YOUR TRIP 🔍




Playgrounds, splash-parks and family fun on the Capricorn Coast

**Visit Capricorn**  
Published by Heather Congram [?] · July 9 at 8:56 AM · 🌐

The new mural is still being completed at the Capricorn Coast Visitor Information Centre, here's where you can check out the other amazing street art around Yeppoon and Emu Park

📍 <https://www.visitcapricorn.com.au/11-street-art-spots-you-m...>  
📺 Little Grey Box

**Appleton Park**

As an all abilities playground it has something for every one. Featuring a mini bike trail, music making equipment, sand pit and a huge climbing 'Octo net' there is loads to keep you busy.

The nearby picnic tables and BBQs also make it the perfect spot to host a birthday party or family get-together.

**Yeppoon Skate Park**

Pack the skateboards, bikes and scooters and let the kids do a few rail slides and kick flips at this epic Skate Park. It features a quarter pipe, hubba ledge, skate rails, euro gap, a bank to ledge, jersey barrier and kerb, and an intermediate bowl.