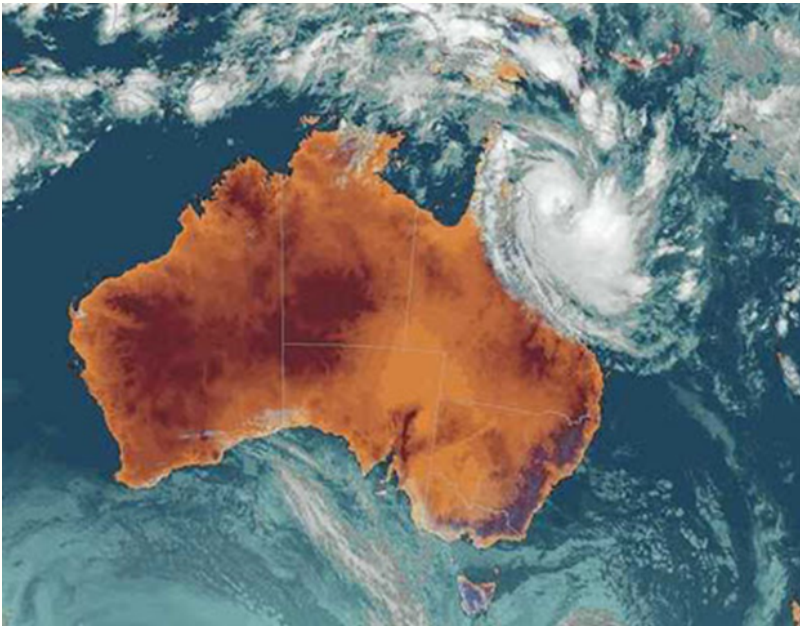


Exercise Business Aware



March 2021

David Mazzaferri
Local Disaster Coordinator
Livingstone Shire



Aim:

To discuss your business approach to a possible event that impacts the Livingstone Shire.



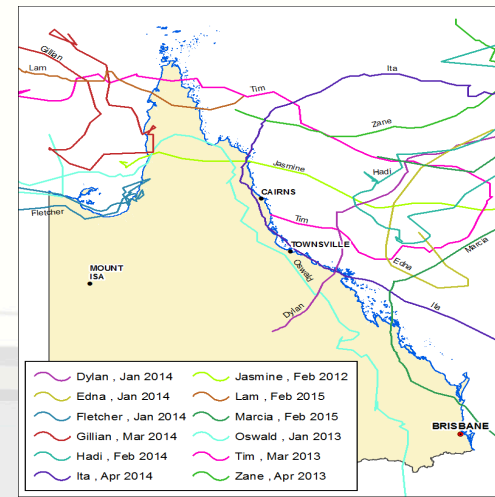
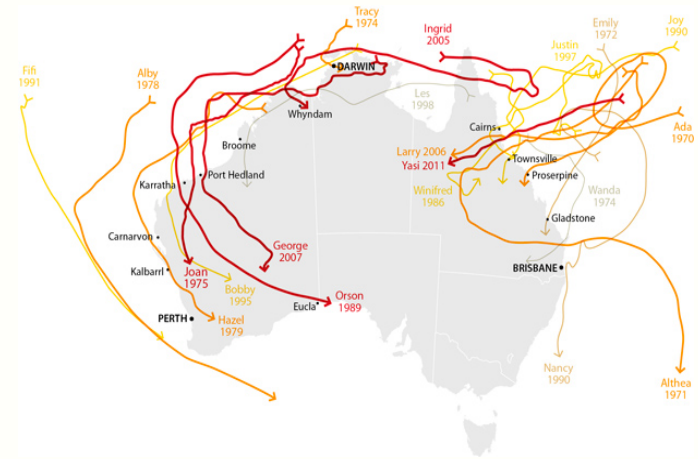
Objectives:

- To discuss the current arrangements of:
 - Accessing information
 - Contacting Staff
 - Ensuring business can operate as soon as possible after an event.

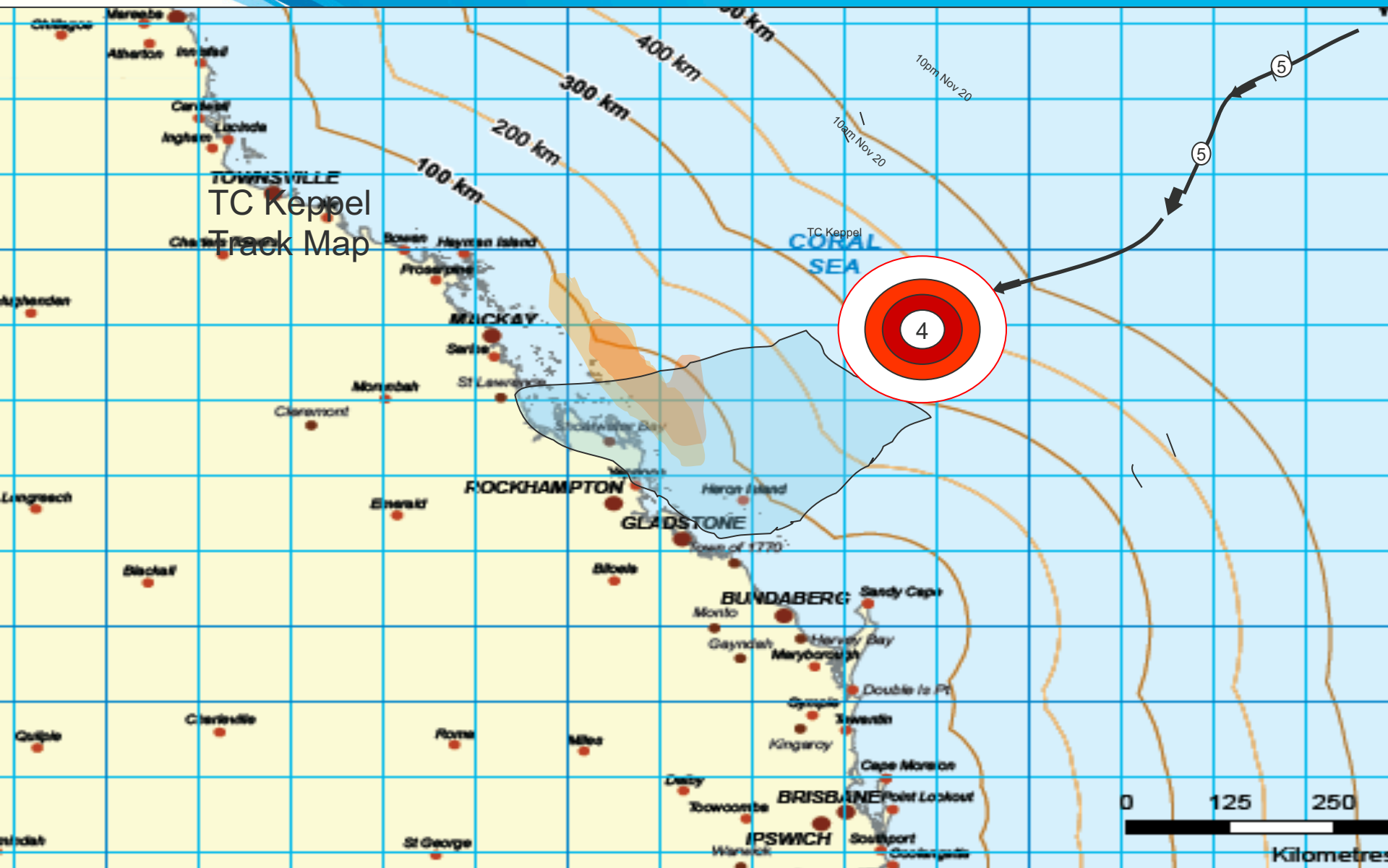


Scenario – Business Aware

- The time is now. Cyclone Phil a category 4 severe tropical cyclone is situated about 300kms northeast of Yeppoon travelling in a south-southwest direction.
- BoM forecasts this cyclone will cross the coast of Queensland just north of Yeppoon in approximately 48 hours. A king tide is due at the time the cyclone crosses the coast.
- The BoM has forecast a storm surge of approximately 1.2 mts above HAT. 100kph winds are forecast to affect the coastline in about 36 hours.

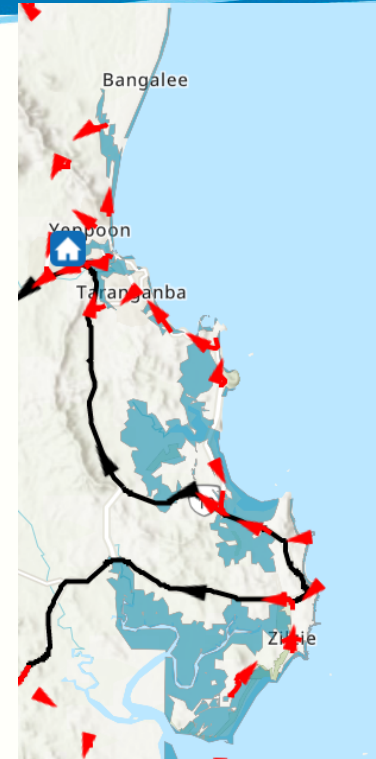


Track Map TC Phil



Situation analysis –

- Cat 4 cyclone – winds in excess of 200kph.
 - TC Phil is expected to cross the coast in 48 hours; 100kph winds in 36hrs.
 - Storm Tide – 4m
 - This is approximately 1.2m above the highest astronomical tide of the year



Storm tide = Normal tide + storm surge +
wave setup

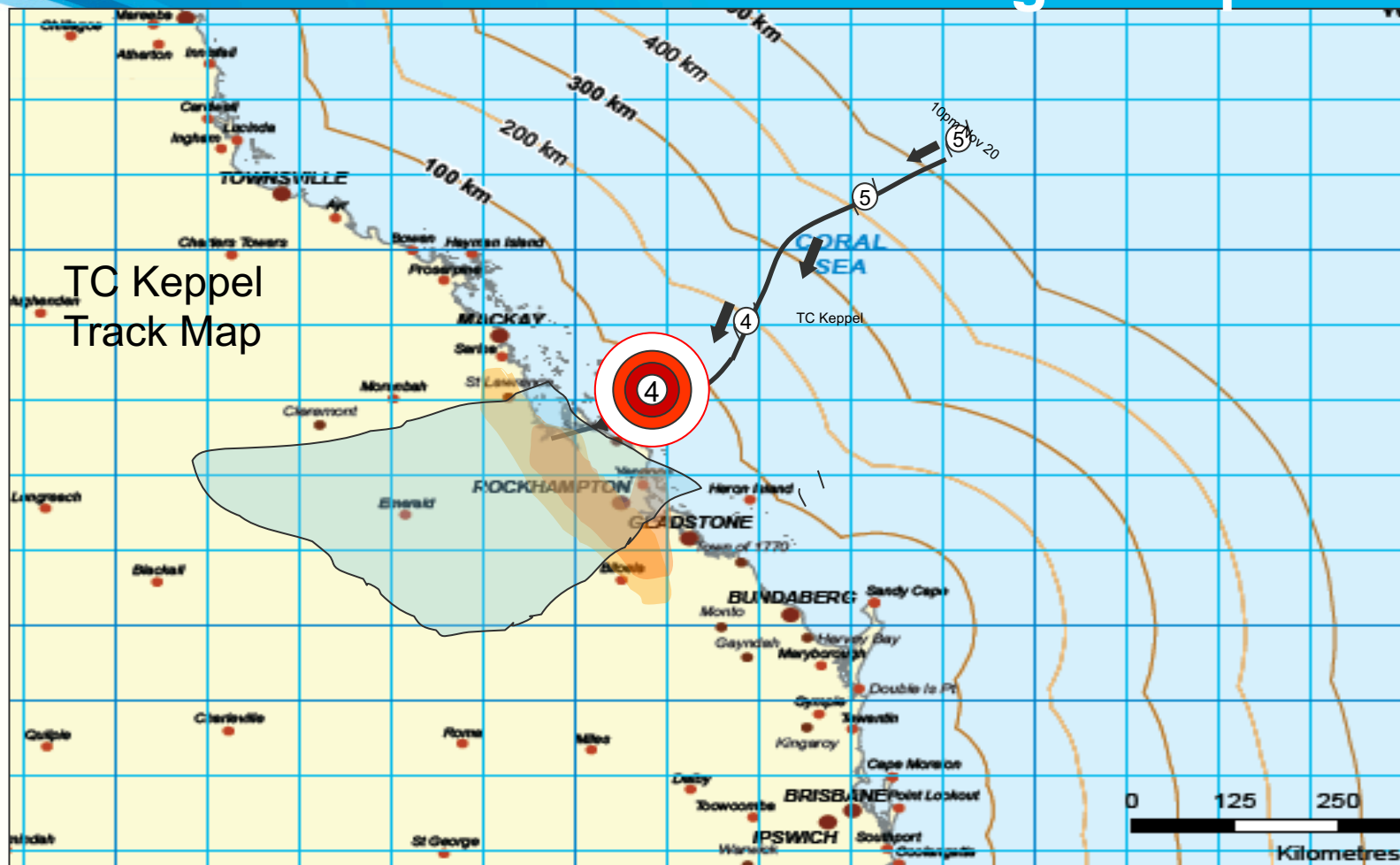


- What are your priorities
- Where do you source information?
- Communications?



Track Map TC Phil

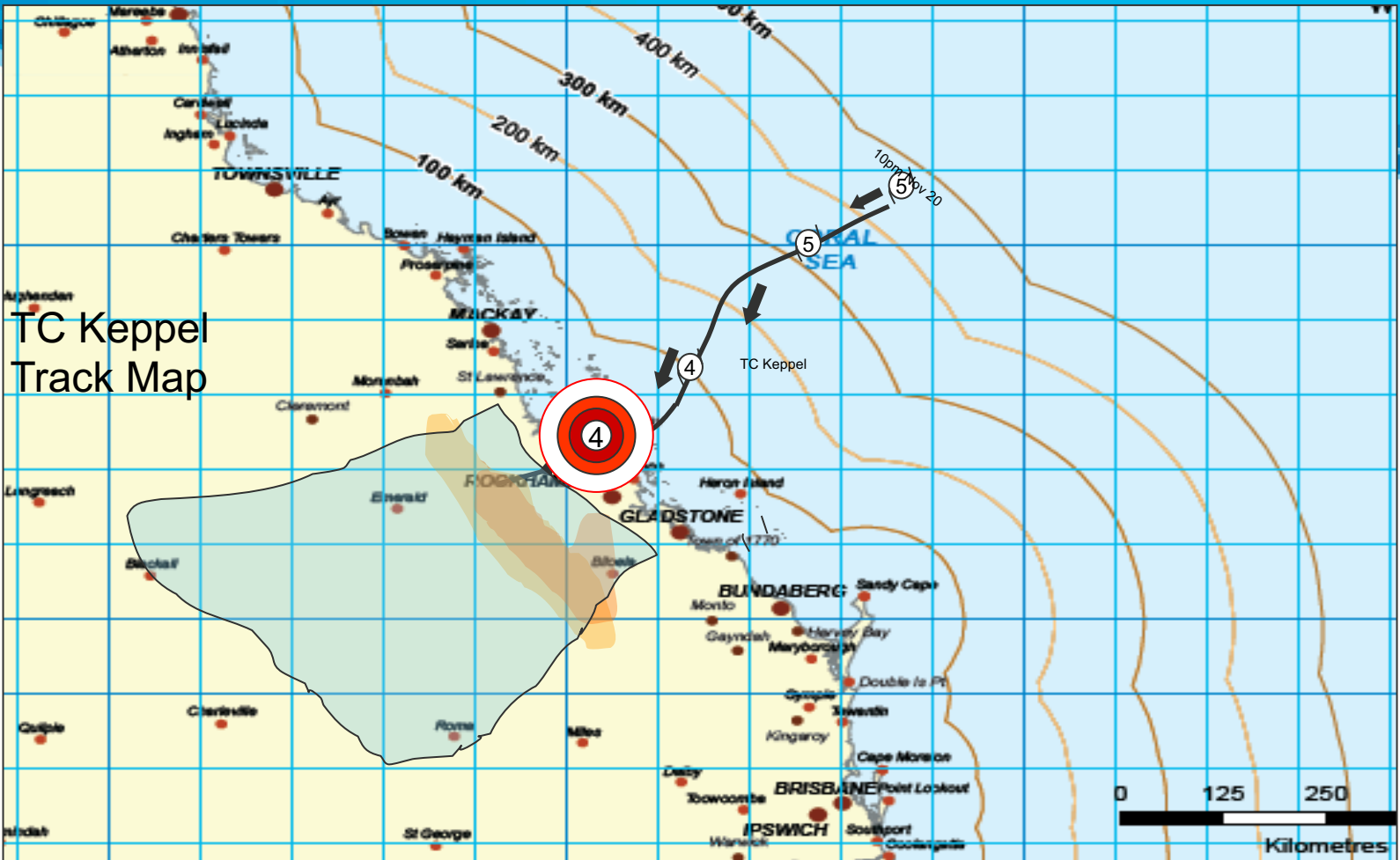
Tracking to Impact



Cyclone tracking to impact

The BoM has forecast a storm surge of approximately 1.2 mts above HAT. 100kph winds are forecast to affect the coastline in about 12 hours.





What do you need to know?
How do you find out?
Communications?



Priorities?

Open for Business

Promotion of one self.



A large, abstract blue graphic at the top of the slide, resembling a stylized wave or a torn piece of paper, with various shades of blue and white outlines.

Severe events can impact on your business in the following ways

- Injury, or serious harm to your staff or customers.
- Damage to buildings; vehicles and other important business assets.
- Property damage, loss of stock and damage to electrical equipment and machinery.

Extended power outages may cause the loss of perishables; disrupt communications and business processes as well as preventing the operation of machinery.



- Impact on staff members' ability to travel to work.
- Suppliers may be unable to deliver goods, which may impact on production schedules.
- Customers and staff may not be able to access your premises for several days due to damage and/or flood impacts.

These impacts can lead to a significant loss of income and affect your business cash flow.

The best way for your business to cope in these circumstances is to have a plan before events strike. Time and clear thinking are luxuries in an emergency situation, which is why it is so important to be prepared.



What is a business continuity plan?

A good business continuity plan should:

- Identify the key disaster risks to the business
- Detail the Incident Response Plan as a checklist
- Specify the critical recovery steps as a checklist
- Analyse the impact of these risks on the business
- Document the business data security and backup strategy
- List all emergency contacts
- Define the business evacuation plan
- Define the contents and location of the business emergency kit



General

Updated your knowledge on what to do in the event of severe storm and ensured staff are also familiar with this? ☐

Business continuity

Developed your business continuity plan, test and update it every six months. ☐

How will you manage your cash flow during this period? ☐

Clearly identify and analyse the possible risks to your business from storm damage. ☐

Identify all useful emergency contacts including, plumbers/electricians, SES, Council, etc. (see Emergency Contact List in this brochure). ☐

Develop regular maintenance and review strategies for your plan. ☐

Store a copy of your business continuity plan off-site in a safe, disaster-proof location. ☐

Stock and equipment

Keep enough stock on hand to supply your business and customers in the event of severe storm damage. ☐

Identify where equipment will be relocated or how it could be protected. ☐

Understand how to manage/dispose of damaged stock e.g. food wastage. ☐

Infrastructure

Trim any tree branches hanging over your roof and cleared your property of any loose items that may blow about. ☐

Clear guttering and downpipes and drainage systems. ☐

Plan for the possibility of an extended power outage e.g. hiring a generator from an equipment hire company? ☐

Insurance

Check whether there is adequate insurance to cover you in the event of a storm? ☐

Contact your insurance company to check if there are any specific preparations you need to make prior to the event? ☐

Business documentation and records

Locate and pack your critical documentation (e.g. insurance, financial, legal and identification documents) in a portable waterproof container. ☐

Backed up your critical data to a portable storage device and stored it in a secure location. ☐



Recovery Information

Activation Level

Click to add/view images of Event



Operation: COVID-19 (Coronavirus)

Status: Local Disaster Management Group - Alert

For information relating to COVID-19 visit Queensland Health website: <https://www.qld.gov.au/health/conditions/health-alerts/coronavirus-covid-19>

For information relating to the latest updates and alerts on COVID-19 visit the Queensland Governments website: www.covid19.qld.gov.au



Community Check-In

Last Updated: 05:35 AM 09/12/2020



Opt-In Notifications



Business Portal

0



Emergency News

Published on 09/12/2020 05:34

0



Active Centres

Published on 09/12/2020 05:34

5



Road Conditions

Published on 09/12/2020 05:36

0



Power Outages

Published on 09/12/2020 05:36



Radar Loop



River Heights



Rainfall



Met Eye



Emergency Action Plan



Storm Tide Hazard



Flood Maps



Rosslyn Bay Tide Gauge

Information

<https://www.getready.qld.gov.au/>

<http://www.bom.gov.au/qld/>

<https://disaster.livingstone.qld.gov.au/>

https://www.ruralfire.qld.gov.au/BushFire_PostCodeChecker/index.html

<https://www.getready.qld.gov.au/understand-your-risk/types-disasters>



Any questions?

Business Continuity

